

# CE Multitester MI 2094



# Portable Appliance Tester



## Withstanding voltage test Pload = 500 VA

- Pre-set voltage in steps up to 5000 V AC.
- Pre-set voltage/time test program (t1, t2, t3; U1, U2).
- Timer from 1 s to 10 min.
- Tripping out test current from 1 mA up to 500 mA.
- Burn-out test.

## Insulation resistance test

- Test voltage 250 V, 500 V and 1000 V DC.
- Measuring range up to 1 G $\Omega$ .
- Programmable limits of resistance.
- Timer from 1 s to 10 min.

## Leakage currents

- Differential.
- Touch.
- Substitute.
- Programmable limits from 0.1 mA to 20 mA.
- Timer from 1 s to 10 min.

## Continuity test

- Test current 100 mA, 200 mA, 10 A or 25 A (voltage <12 V AC).
- Resistance threshold in steps from 100 m $\Omega$  to 2  $\Omega$ .
- Timer from 1 s up to 20 s.
- Voltage drop / wire section threshold scaled to 10 A AC.

## Functional tests

- Power, Apparent power, Cos  $\phi$ , Voltage, Current, Frequency.

## Discharge time

- External, internal.

## Memory and print-out of measurement reports

- 1638 memory locations.
- PC software CE link with RS 232 communication cable.

## Portable, multipurpose instrument for measurements in accordance with:

- IEC 60204-1
- Electrical equipment of machines
- IEC 60335-1
- Household and similar electrical appliances
- IEC 60439-1
- Switchgear and controlgear assemblies
- IEC 60598-1
- Luminaires
- IEC 60745
- Hand-held motor-operated tools
- IEC 60755
- Residual current operated protected devices
- IEC 60950
- Safety of information technology equipment
- IEC 61010-1
- Safety requirements for electrical equipment
- IEC 61029
- Transportable motor-operated tools
- IEC 61558-1
- Transformers and power supply units
- EN 60065
- Audio, video and similar electronic apparatus
- VDE 701 T1
- Repair and modification inspections
- VDE 702 T1
- Repeat tests of electrical appliances

## Technical specification

### Withstanding test 500 VA:

Trip-out current settable limit 0.5 ÷ 500 mA	100 V ÷ 999 V AC	±(2 % +5 dig.)
	1000 V ÷ 5 kV AC	±(3 % +5 dig.)

### Insulation resistance test:

Test voltage: 250 V, 500 V, 1000 V DC	0.000 ÷ 1.999 MΩ	±(5 % +10 dig.)
Current 1 mA min.	2.000 ÷ 199.9 MΩ	±(3 % +3 dig.)
Programmable resistance limits	200 ÷ 999 MΩ	±(10 % +10 dig.)

### Continuity test:

Test current	Test current	
Test voltage <6 V AC	10 A, 25 A	0.000 ÷ 0.999 Ω ±(3 % +3 dig.)
Programmable resistance limits		1.000 ÷ 2.000 Ω ±(3 % +10 dig.)
	100 mA, 200 mA	0.00 ÷ 9.99 Ω ±(5 % +12 dig.)

### Voltage drop test (scaled to 10 A AC):

0.00 ÷ 10.00 V ±(3 % +3 dig.)

### Discharge time test (internal, external):

0 ÷ 10 s, ±(2 % +0.2 s)

**PE leakage current test** (Programmable limits): 0.00 ÷ 20.0 mA, ±(3 % +3 dig.)

**Substitute leakage current test** (Programmable limits): 0.00 ÷ 20.0 mA, ±(3 % +3 dig.)

**Touch leakage current test** (Programmable limits): 0.00 ÷ 20.0 mA, ±(3 % +3 dig.)

Power, Apparent Power	Voltage	Current	Cos j	Frequency
1 ÷ 199.9 W	0 ÷ 400 V	0 ÷ 0.999 A	0 ÷ 1.00	45 ÷ 65 Hz
±(5 % +10 dig.)	±(2% +2 dig.)	±(3 % +5 dig.)	±(3 % +3 dig.)	±(0.1 % +3 dig.)
200 ÷ 3500 VA		1.00 ÷ 15.99 A		
±(5 % +3 dig.)		±(5 % +5 dig.)		

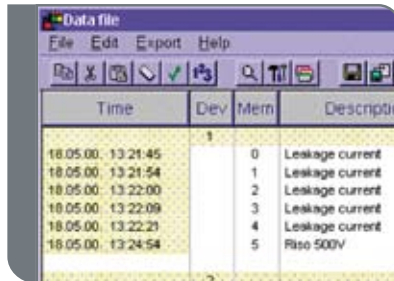
## General

Case:	shock proof plastic / portable
Power Supply:	230 V (50 Hz, 60 Hz)
Overvoltage category:	CAT III/300 V, CAT II/600 V
Pollution degree:	2
Degree of protection:	IP 50
Protection classification:	I
Display:	160 × 116 dot graphic matrix display with backlight
Memories:	1638
Dimensions (w x h x d):	410 × 175 × 370 mm
Weight (without accessories):	13.5 kg

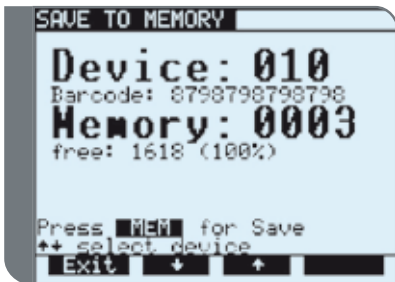
## Key Features



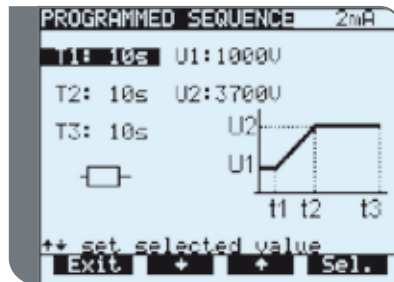
Inputs/outputs for manual or automatic settings.



PC Software CE Link.



Memorizing of particular testing results.



Wide range of simple menus for programming.

## Ordering information

Standard set

MI 2094



Instrument CE MultiTester  
 HV test pistol with 2 m cable, 2 pcs  
 CONTINUITY test lead - 2.5 m, 2 pcs  
 INSULATION test lead - 2.5 m, red  
 INSULATION test lead - 2.5 m, black  
 Alligator clip - black, 3 pcs  
 Alligator clip - red, 2 pcs  
 DISCHARGE TIME cable  
 Mains cable  
 Accessory bag  
 Instruction manual  
 Product verification data

## Optional Accessories

Photo	Order No.	Description
	A 0941	Remote control pedal
	A 0942	Warning lamp
	A 1014	Test tip, black
	A 1016	Test tip, red
	A 1017	EXT/DOOR IN cable
	A 1059	ISO-CONTINUITY adapter
	A 1060	Two way mains adapter
	A 1061	Bar code scanner
	A 1073	PC SW CE Link with interface cable
	S 1057	HV test cable with plug, 6 m set of 2 pcs
	S 1058	CONTINUITY test lead, 10 m, 2 pcs
	S 1072	CONTINUITY test lead with 2 pole alligator clip, 2.5 m, set of 2 pcs

Note! Photographs in this catalogue may slightly differ from the instruments at the time of delivery. Subject to technical change without notice.



Measuring and Regulation Equipment Manufacturer

METREL d.d.  
 Ljubljanska 77  
 SI-1354 Horjul  
 Tel: + 386 (0)1 75 58 200  
 Fax: + 386 (0)1 75 49 226  
 E-mail: metrel@metrel.si  
 http://www.metrel.si